



Fast & effective **construction adhesives**

What are VORAMER™ Adhesives for Manufactured Housing?

VORAMER™ Adhesives Manufactured Housing are polyurethane foam systems that have been independently tested and meet various requirements for gypsum-to-wood fastening applications within the construction industry. Dow offers both two-component and one-component polyurethane adhesives.

What do they do?

VORAMER™ Adhesives Manufactured Housing allow for fast, easy and secure bonds between drywall, wood and other substrates. These adhesives enhance the structural integrity of ceiling, wall and sub-floor assemblies, replacing or complementing screws or other mechanical fasteners for a more efficient installation process.

How does the adhesive work?

The two-component adhesives are designed to combine the “A” (MDI) component and “B” (polyol) component through high-pressure proportioning equipment. It is mixed and applied using a two-component, adjustable or fixed stream mix-head. The dispensed, targeted stream is directed at the conjunction

of substrates by the operator. The material cures through the combination of both A and B components.

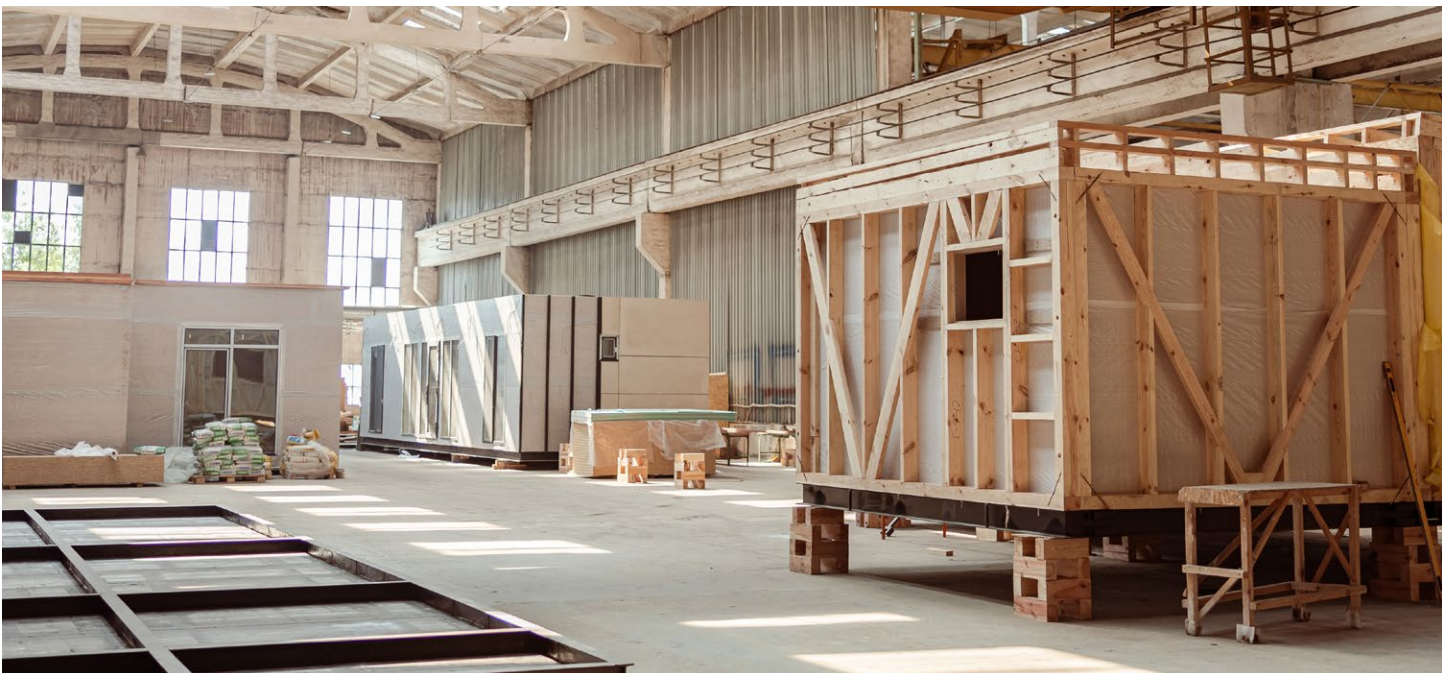
The one-component adhesive is also designed to be used with high-pressure equipment, however does not require proportioning equipment as it cures from air moisture.

Why are they better than other options?

What matters the most on a worksite? Ease of use. Efficiency. Safety. VORAMER™ Adhesives Manufactured Housing offer all of these and more.

- VORAMER™ MB 3099 is a high expanding foam that can enable higher coverage for more efficient material use with proper application.
- All options can be used to complement typical construction fasteners, reduce the number of needed fasteners, or even eliminate the need for fasteners altogether.

See our available products on the next page



Chemistry	Product name	Description
Two-component	VORAMER™ MB 3099 VORAMER™ ME 3044	A two-component polyurethane adhesive for adhering roof trusses with drywall ceiling board or assembling walls typical in Manufactured Housing.
	VORAMER™ MB 3022 VORAMER™ ME 3044	
One-component	VORAMER™ ME 3515	A one-component, moisture curing polyurethane adhesive for adhering dry wall to wooden studs or any porous substrate – typically used in assembling walls and subfloors in Manufactured Housing.

Chemistry	Product name	Viscosity (Cps) ¹	Working Time ² (min)	Rise (sec)	Tack-Free (sec)	Final Cure (min)
Two-component	VORAMER™ MB 3099 VORAMER™ ME 3044	3099: 700 3044: 200	—	15-25	40-50	5
Two-component	VORAMER™ MB 3022 VORAMER™ ME 3044	3022: 350 3044: 200	—	10-20	30-40	5
One-component	VORAMER™ ME 3515	3,500	17-23	—	—	42-48

¹77°F using ASTM D4889
²65°F and 45% humidity



Images: dow_76220489984, dow_75874269300, dow_58823032555

NOTICE: No freedom from infringement of any patent owned by Dow or others is to be inferred. Because use conditions and applicable laws may differ from one location to another and may change with time, Customer is responsible for determining whether products and the information in this document are appropriate for Customer's use and for ensuring that Customer's workplace and disposal practices are in compliance with applicable laws and other government enactments. The product shown in this literature may not be available for sale and/or available in all geographies where Dow is represented. The claims made may not have been approved for use in all countries. Dow assumes no obligation or liability for the information in this document. References to "Dow" or the "Company" mean the Dow legal entity selling the products to Customer unless otherwise expressly noted. NO WARRANTIES ARE GIVEN; ALL IMPLIED WARRANTIES OF MERCHANTABILITY OR FITNESS FOR A PARTICULAR PURPOSE ARE EXPRESSLY EXCLUDED.

™ Trademark of The Dow Chemical Company ("Dow") or an affiliated company of Dow

© 2023 The Dow Chemical Company. All rights reserved.

2000024564-5829

Form No. 756-286-01-0523 S2D